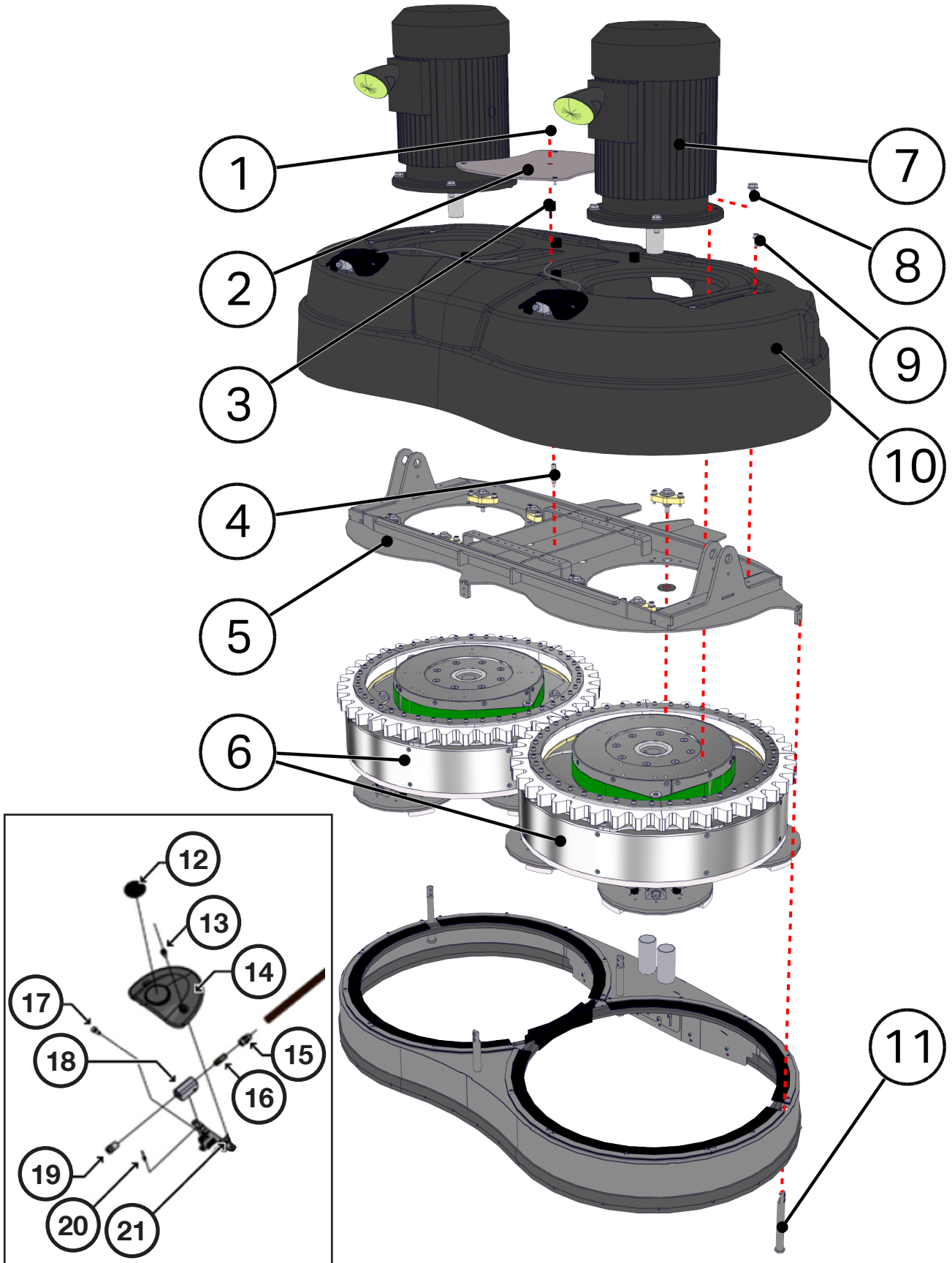




# Parts Catalog HTC 1500iXT

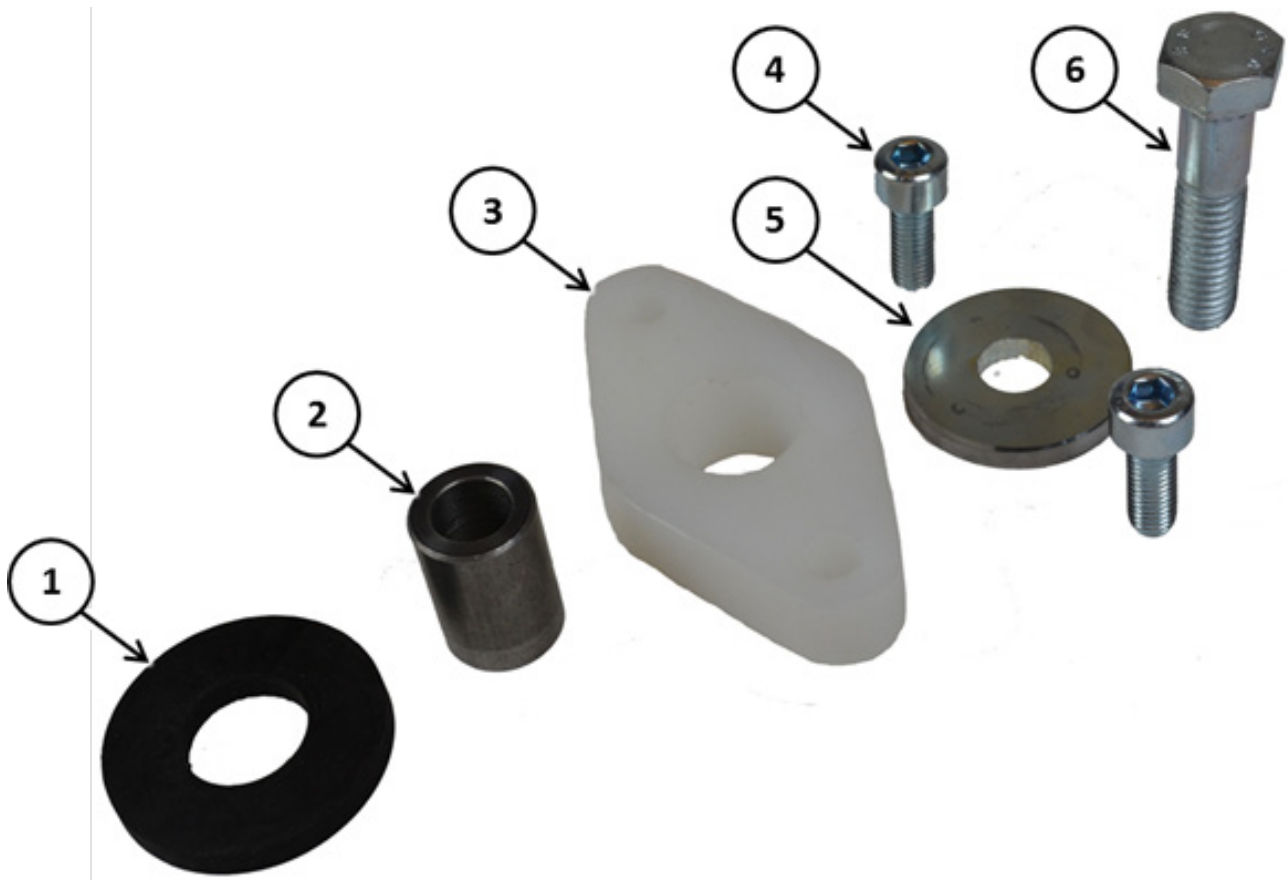


## Grinding head connection



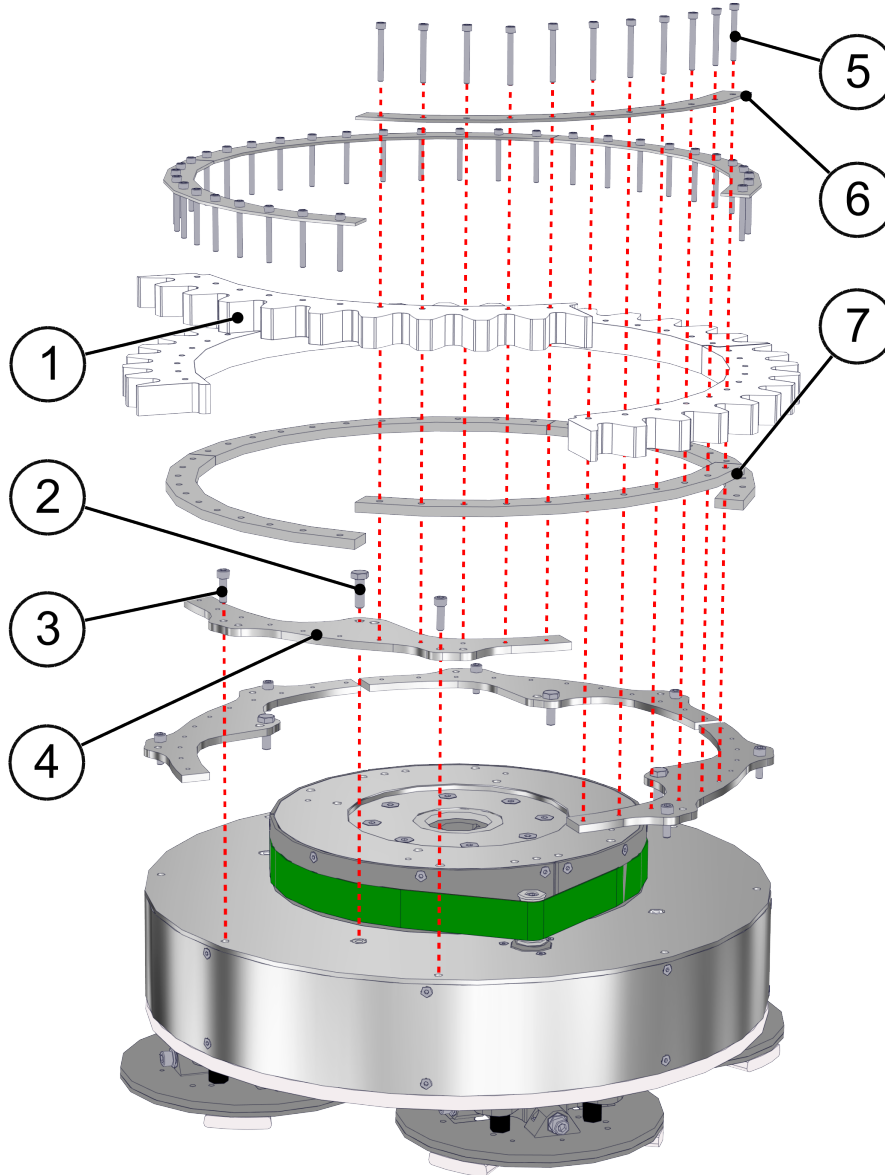
Item	Description	Part no	Qty
1	SCREW M6x16	310292	5
2	FOOT PLATE	500354	1
3	VIBRATION DAMPERS	112719	5
4	SPACER SCREW	310362	1
5	GRINDING HEAD FRAME	500336	1
6	GRINDING HEAD	112712	2
7	MOTOR 11Kw	113500	2
8	SCREW M12x30	310128	8
	WASHER M12	310057	8
9	SCREW M8x20	310161	4
	WASHER M8	310077	4
10	COVER	112638	1
11	SCREW M6x16	310292	8
	SLIDE SHAFT	500348	4
12	DECAL	111585	2
13	SCREW M6x12 8.8	310030	4
14	NOZZLE COVER	111487	2
15	HOSE CINNECTION 1511-6/4-1/4	111523	2
16	FILTER	111398	2
17	SCREW M6x10	310005	4
18	NOZZLE HOLDER	111488	2
19	NOZZLE	111397	2
20	POP RIVET 4.8x12.7	310084	3
21	NOZZLE COVER BRACKET	111489	2

### Grinding head floating connection



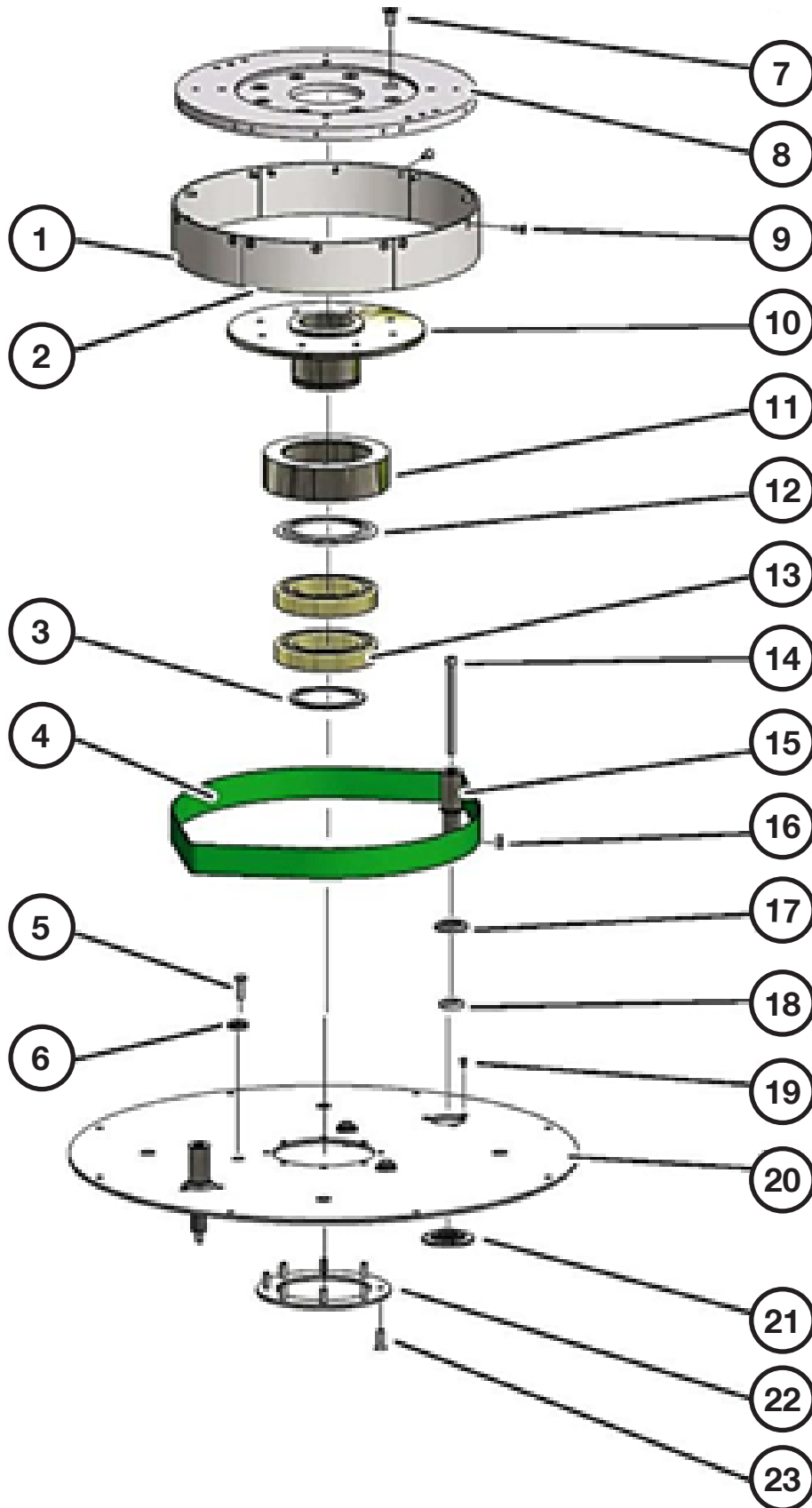
Item	Description	Part no	Qty
1	RUBBER WASHER	500907	1
2	SLEEVE	500904	1
3	BRACKET	500989	1
4	SCREW M8x22	310435	2
5	WASHER	500905	1
6	SCREW M10x50	310047	1

## Grinding head - Timing gear



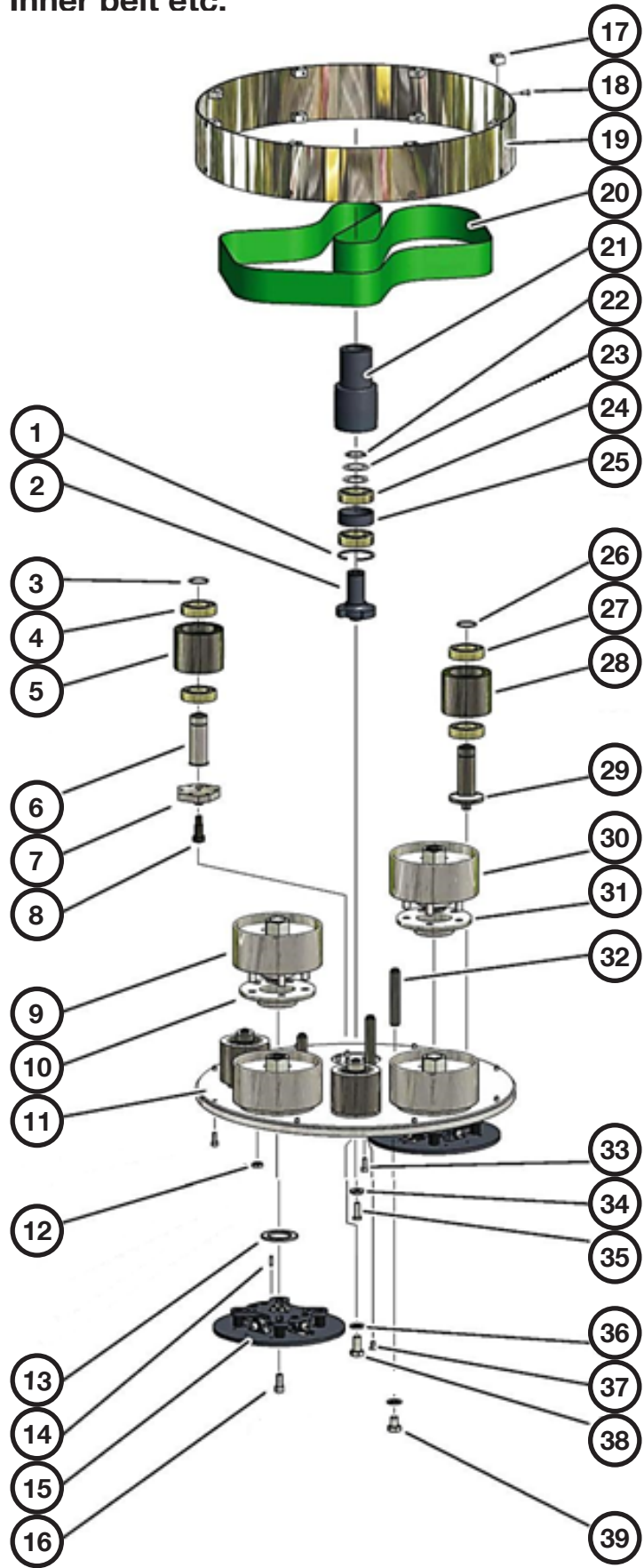
Item	Description	Part no	Qty
1	TIMING GEAR SEGMENT	500486	4
2	SCREW M10X30	310066	4
3	SCREW M8X25	310065	4
4	TIMING GEAR BRACKET	500484	4
5	SCREW M6X50	310399	44
6	TIMING GEAR WASHER	500326	4
7	TIMING GEAR DISTANCE	500327	4

Grinding head - Motorplate etc



Item	Description	Part no	Qty
1	BELT RING LONG	111448	2
2	BELT RING SHORT	111449	2
3	CIRCLIP	310166	1
4	UPPER BELT	111296	1
5	SCREW M8X25	310001	3
6	WASHER M8	310015	3
7	SCREW M10X20	310078	8
8	MOTOR PLATE	111072	1
9	SCREW M6X16	310292	14
10	HUB MOTOR PLATE	111076	1
11	BEARING CUP	110917	1
12	NILOS RING	110950	1
13	BALL BEARING 6017	110951	2
14	SCREW M8X120	310235	2
15	AXLE JOURNAL	110931	2
16	PARALLEL KEY	310222	2
17	GAMMA RING	110949	2
18	RADIAL SEAL	110948	2
19	SCREW M5X10	310265	6
20	UPPER PLATE	111070	1
21	SPACER	110929	2
22	COVER CENTER HUB	110921	1
23	SCREW M8X25	310130	8

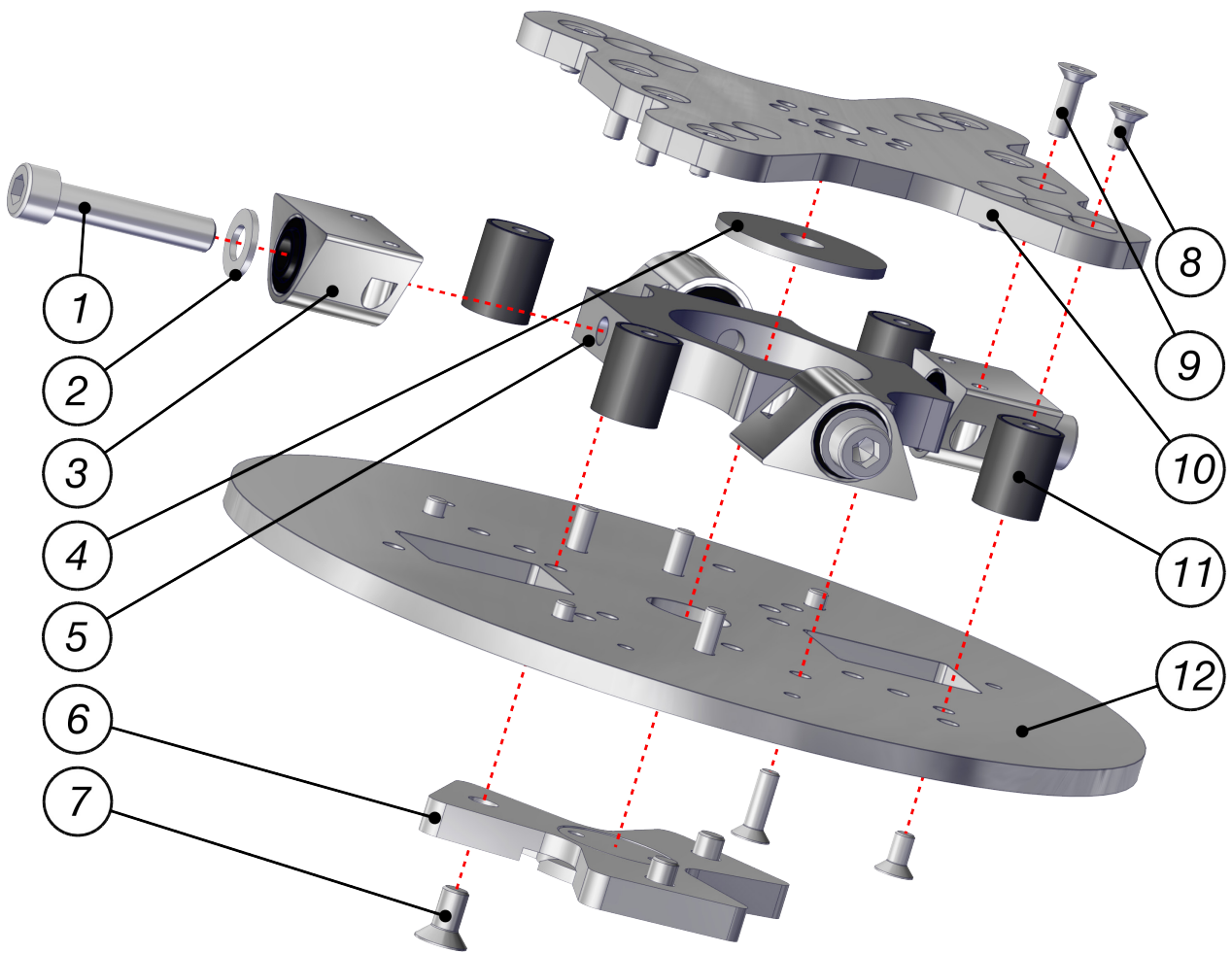
Grinding head - Inner belt etc.





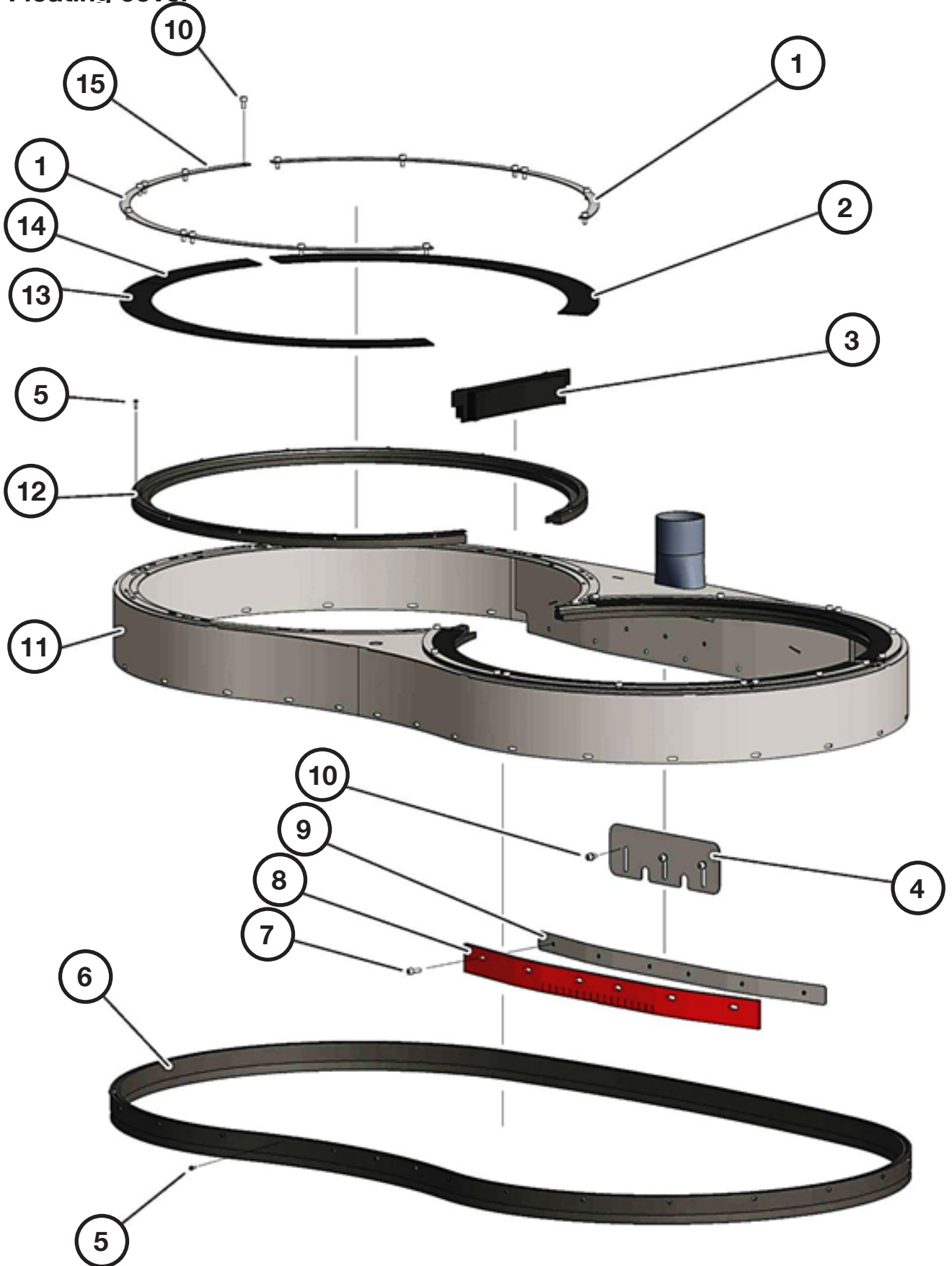
Item	Description	Part no	Qty
1	CIRCLIP	310342	1
2	AXLE CENTER PULLEY	500287	1
3	CIRCLIP	310038	2
4	BALL BEARING 6207	110078	4
5	PRESS WHEEL	110933	2
6	SHAFT TENSIONING WHEEL	110935	2
7	TENSIONING WHEEL PLATE	110936	2
8	SHOULDER SCREW M12x25	310167	2
9	HUB PACKAGE NOT DRIVING INCL. - POS.60	111526	2
10	SPACER HUB	110927	1
11	LOWER PLATE	500288	1
12	NUT M14	310169	20
13	HUB SEAL	110960	1
14	CYLINDER PIN	310046	24
15	GRINDING HOLDER CARDAN COMPLETE	112251	4
16	SCREW M12X25	310175	4
17	FIXING BOSS	110928	16
18	SCREW M6X16	310292	16
19	EDGING STRIP	111069	1
20	INNER BELT	112621	1
21	CENTER PULLEY	500285	1
22	CIRCLIP	310038	1
23	DISC SPRING	112620	2
24	BALL BEARING 6207	110078	2
25	SPACER CENTER PULLEY	500286	1
26	CIRCLIP	310038	2
27	BALL BEARING 6207	110078	4
28	PRESS WHEEL	110933	2
29	PRESS WHEEL AXLE	110932	2
30	HUB PACKAGE DRIVING - INCL. POS.46	111235	2
31	SPACER HUB	110927	1
32	SHAFT SUPPORT	110925	3
33	SCREW M8x20	310161	23
34	WASHER M10	310042	4
35	SCREW M10x30	310066	4
36	WASHER M16	310032	4
37	SCREW M8x16	310070	8
38	SCREW M16x30	310170	1
39	SCREW M16x20	310231	3

## Grinding holder



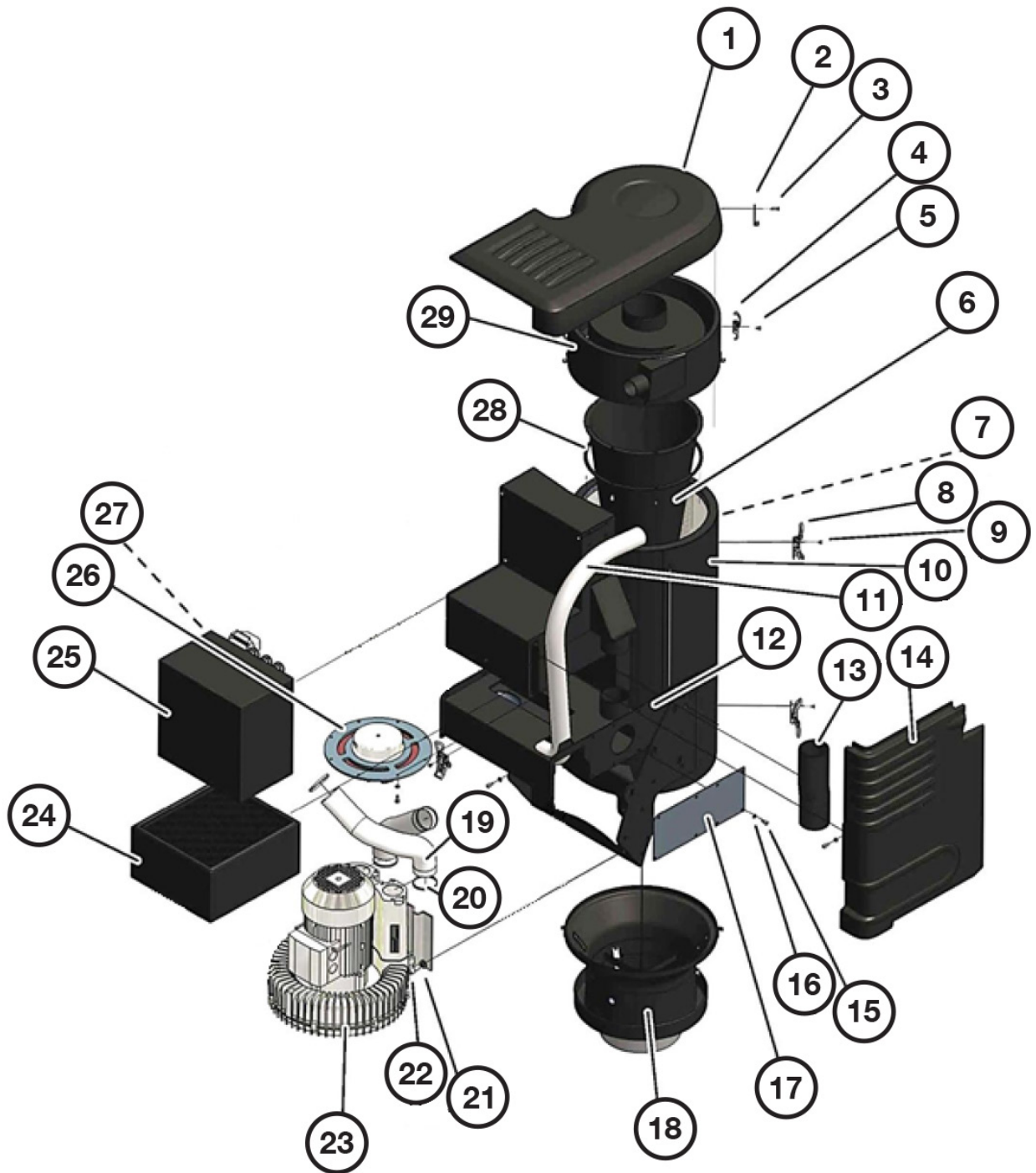
Item	Description	Part no	Qty
1	SCREW M10x35	310019	4
2	WASHER M10	310048	4
3	EAR WIDE COMPLETE	502211	4
4	WASHER	112243	1
5	CARDAN CONNECTION	112241	1
6	CROSS CMPL. INCL. POS.7	110967	1
7	SCREW M8x16	310070	3
8	SCREW M6x12	310312	8
9	SCREW M6x20	310212	8
10	UPPER GRINDING HOLDER PLATE	112239	1
11	VIBRATION DAMPER	112247	4
12	LOWER GRINDING HOLDER PLATE	112242	1

Floating cover



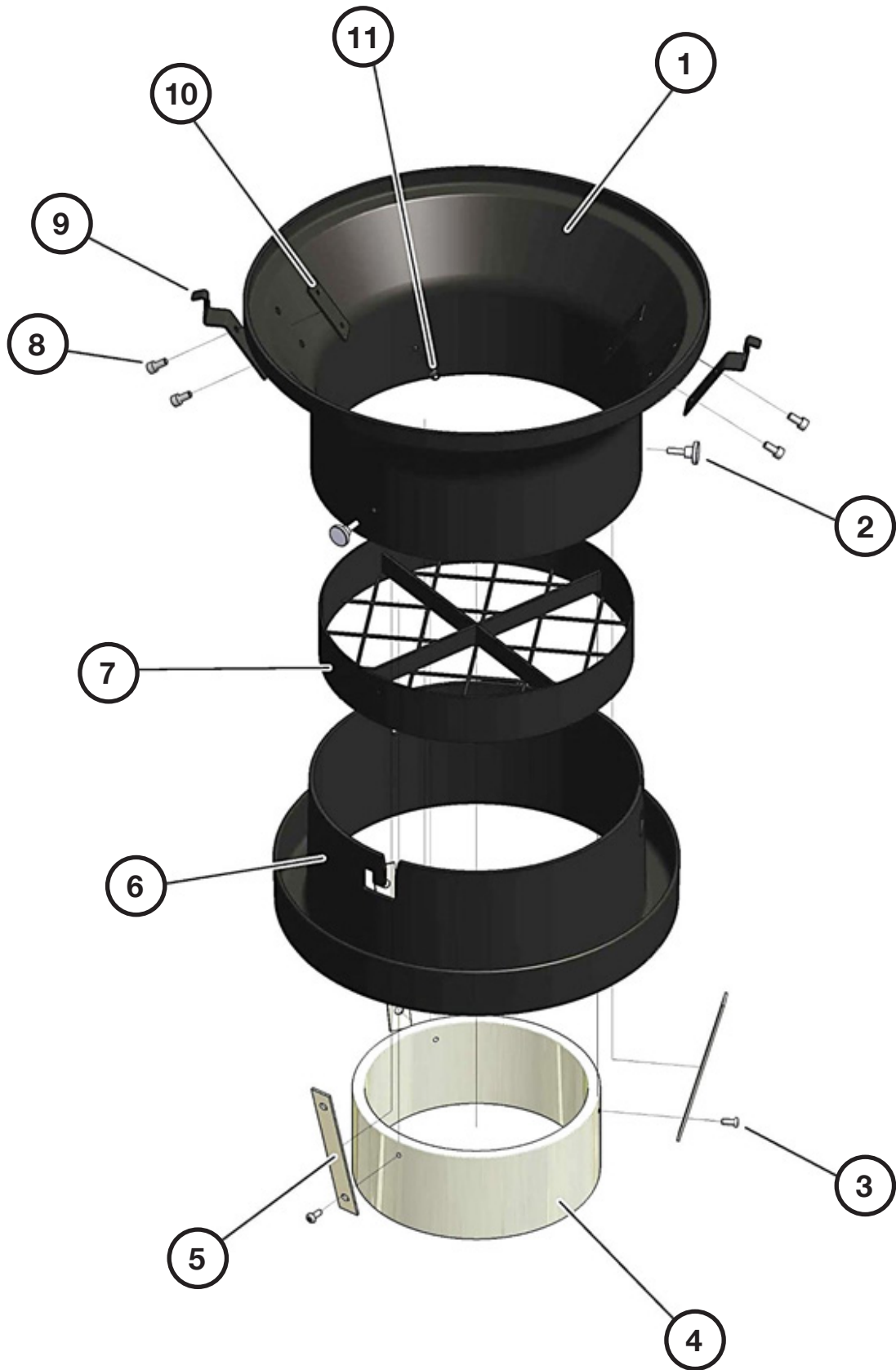
Item	Description	Part no	Qty
1	EPDM HOLDER LONG	500389	8
2	EPDM SEAL LONG	112733	8
3	CENTER BRUSH	112739	1
4	FLOATING COVER VALVE	500372	1
5	SCREW 3.5x13	112358	55
6	BRUSH STRIP 15MM	112610	3.8m
7	SCREW M6x16	310292	6
8	RUBBER STRIP	112735	1
9	RUBBER STRIP HOLDER	500359	1
10	SCREW M6x12	310030	33
11	FLOATING COVER	500363	1
12	BRUSH STRIP	112478	4m
13	EPDM SEAL SHORT	112734	2
14	EPDM HOLDER SHORT	500393	2

### Vac system



Item	Description	Part no	Qty
1	TOP COVER	112513	1
2	HOOK	112472	2
3	POP RIVET	310436	4
4	EXCENTRIC LOCK	112321	2
5	SCREW M5x8	310028	12
6	PRESEPARATOR	112512	1
7	CARTRIDGE FILTER	112921	1
8	LATCH	112865	5
9	SCREW M5x8	310028	15
10	CYCLONE	112403	1
11	HOSE 2"	113367	6m
12	BRANCHING BOX	112407	1
13	HOSE 3"	113744	0.3M
14	SIDE COVER	112282	1
15	SCREW M6x12	310030	12
16	WASHER M6	310012	11
17	COVER PLATE	112480	1
18	BOTTOM CONE	NEXT PAGE	
19	HOSE 2.5"	112517	0.2m
	HOSE 2.5"	112517	0.55m
20	HOSE CLAMP 2.5"	112529	4
21	WASHER M12	310057	4
22	SCREW M12x25	310175	4
23	SIDE CHANNEL FAN	112514	1
24	ABSOLUT FILTER	112506	1
25	POWER UNIT 3	112693	1
	POWER UNIT 4	112694	1
26	VALVE	112405	1
27	SCREW M6x10	310005	4
28	CYCLONE RING	112473	1
29	CYCLONE TOP	112404	1
	CYCLONE TOP COMPLETE INCL. POS. 4. 6. 41. 42	502909	1

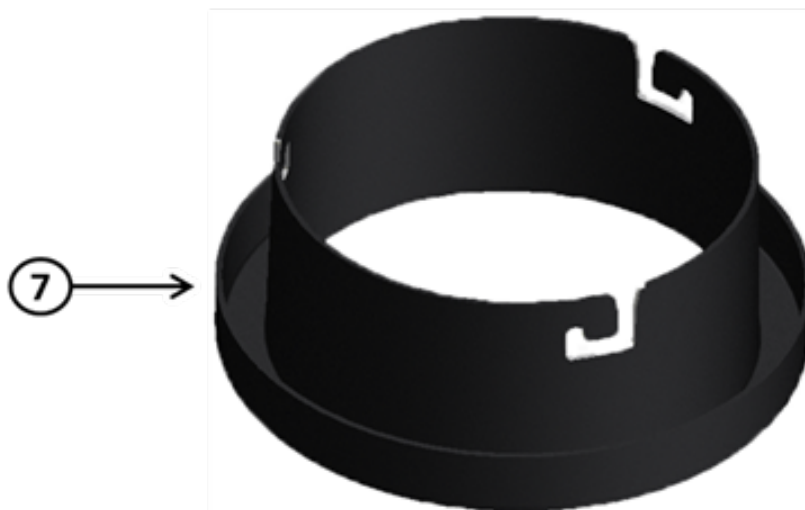
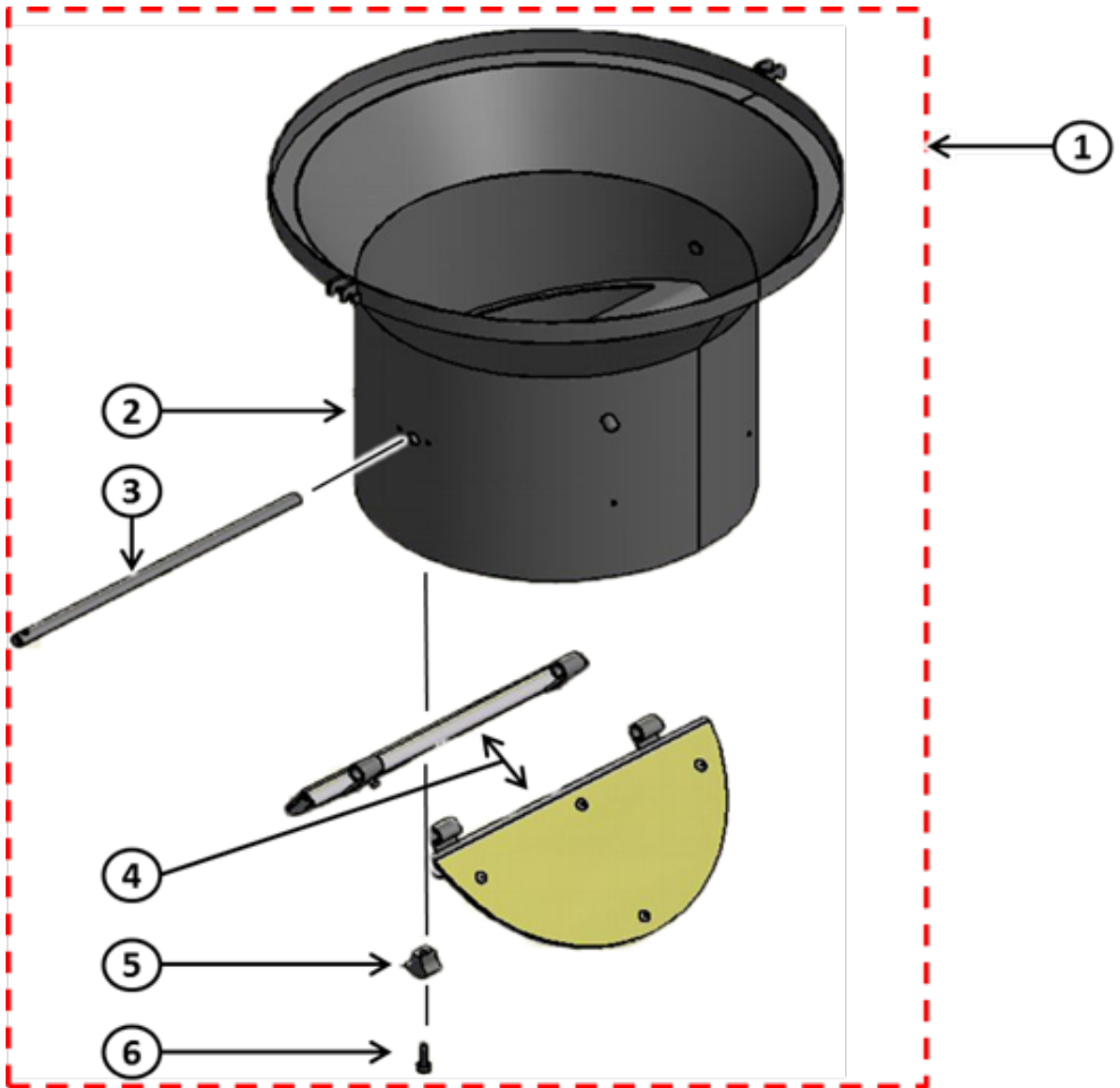
Bottom cone V1





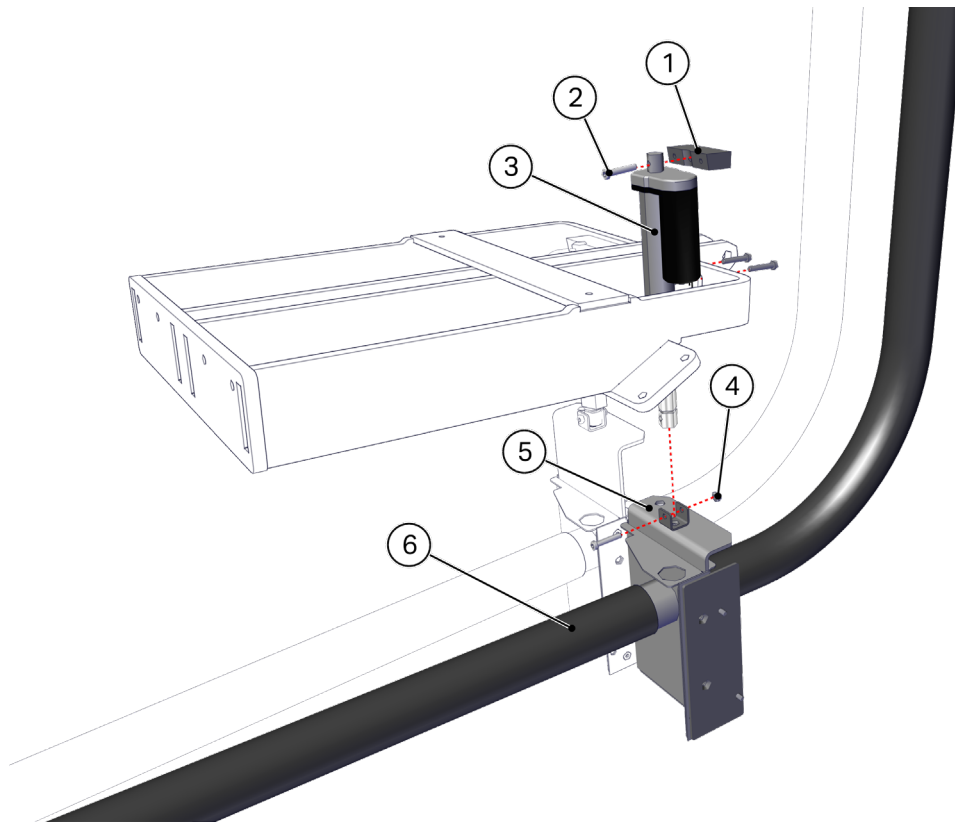
Item	Description	Part no	Qty
1	BOTTOM CONE	112246	1
2	BAYONET SCREW	112504	3
3	SCREW M5x12	310343	3
4	WEIGHT RING	112423	1
5	WEIGHT BELTS	112599	3
6	LONGOPAC HOLDER	501434	1
7	BOTTOM NET	112406	1
8	SCREW M6x12	310030	4
9	FASTENING HOOK	112470	2
10	FASTENING HOOK BRACKET	112471	2
11	LOCK NUT M5	310262	3

### Bottom cone V2



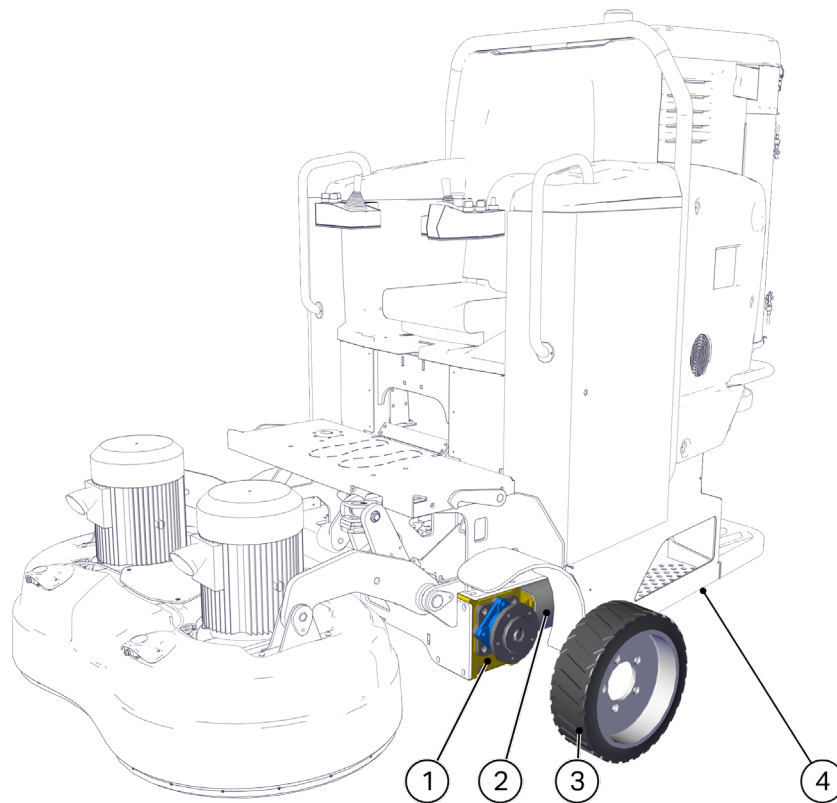
Item	Description	Part no	Qty
1	BOTTOM CONE CMPL	501172	1
2	BOTTOM CONE	501167	1
3	AXLE	500704	1
4	DUST SHEET	501895	2
5	WEDGE	502062	1
6	SCREW M5x20	310185	1
7	LONGOPAC HOLDER	501434	1

Vac-valve



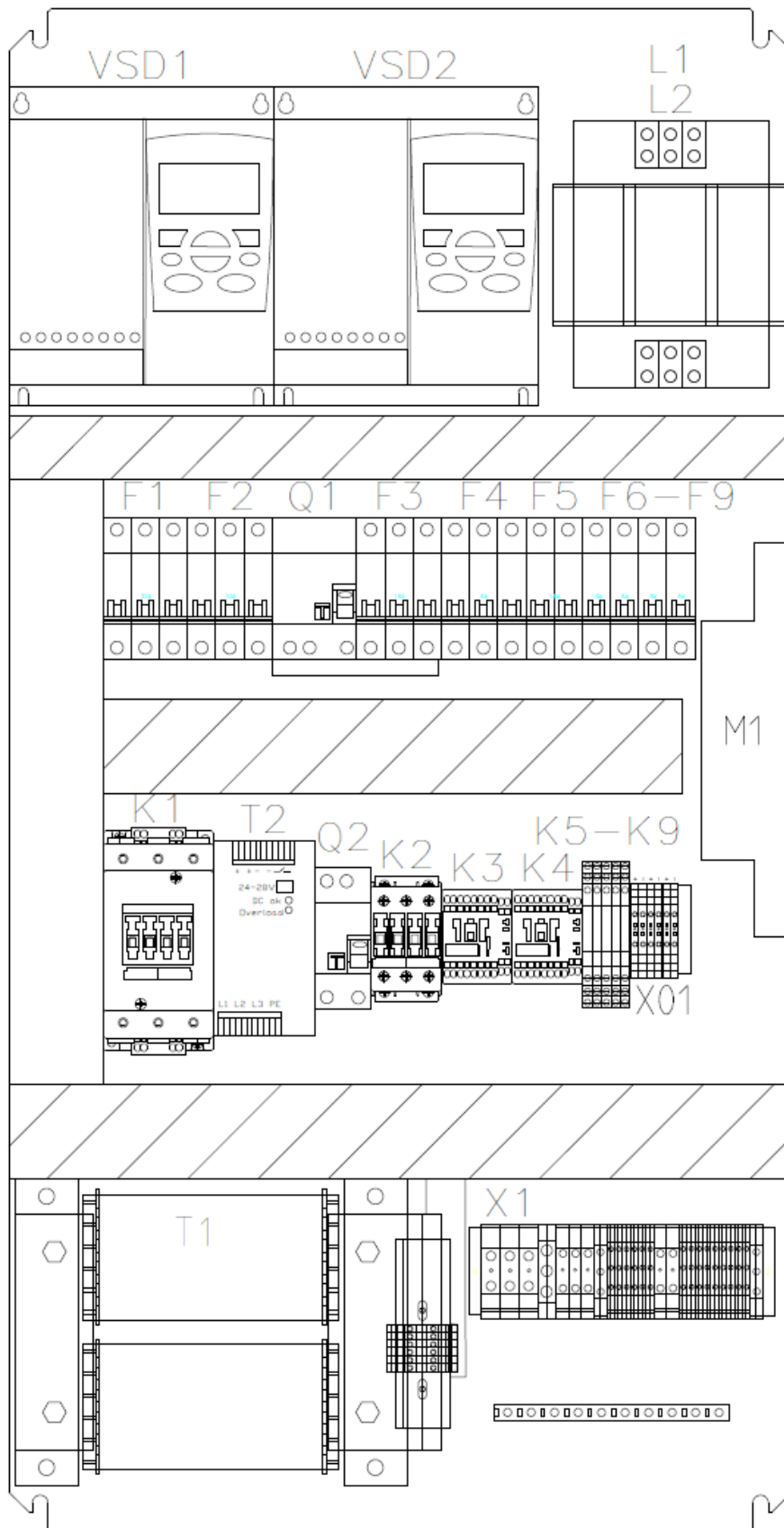
Item	Description	Part no	Qty
1	ACTUATOR BRACKET	502797	1
2	SCREW M6X30	310352	4
3	ACTUATOR 110N	112881	1
	ACTUATOR 340N	113497	1
4	LOCK NUT M6	310072	1
5	VALVE	113755	1
	VALVE INCL. ACTUATOR 340N	502322	1
6	HOSE 2"	113367	7.2M

## Wheels and gear



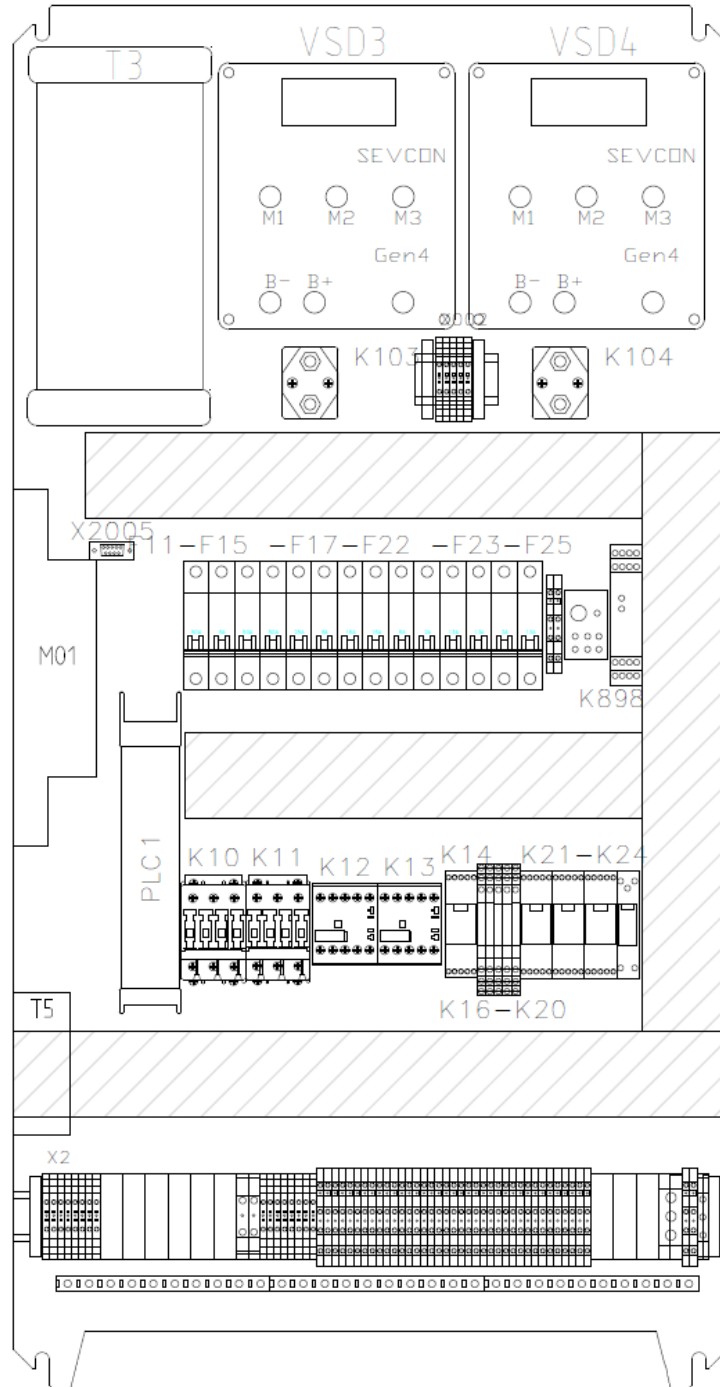
Item	Description	Part no	Qty
1	GEAR UNIT	112663	1
2	DRIVE MOTOR	112662	1
	DRIVE MOTOR INCL. CABLING	113876	1
3	WHEEL	112636	1
	WHEEL BOLT	112631	5
4	REAR WHEEL DISTANCE PLATE	500533	1
	SWIVEL CASTER	112942	1

PU-1 - component list



Item	Part no	Description
VSD1	560294	Left grinder inverter
VSD2	113504	Right grinder inverter
L1	560136	Line filter for inverter
L2		Line filter for inverter
F1	560349	Fuse - Left inverter
F2		Fuse - Right inverter
F3	560134	Fuse - Vac's
F4	112395	Fuse - Power supply T2
F5		Fuse - Transformer T1
F6	112394	Fuse - 230v transformer sec PU2
F7	560188	Fuse - Control power 230V contactors
F8	112395	Fuse - Cooling fan's
F9		Fuse - Mist cooler system
Q1	560137	RCCD - Vac's
K1	113416	Contactor - Main contactor
T2	561016	Power supply - 400V – 24V DC
Q2	560138	RCCD - Main
K2		Contactor - Vac's
K3	113620	Contactor - Cooling fan's
K4		Contactor - Mist cooler system
K5	113494	Support relay - Main contactor
K6		Support relay - Vac's
K7		Support relay - Cooling
K8		Support relay - Mist cooler system
K9		Support relay - Cooling fan's
T1		111891

PU-2 - component list

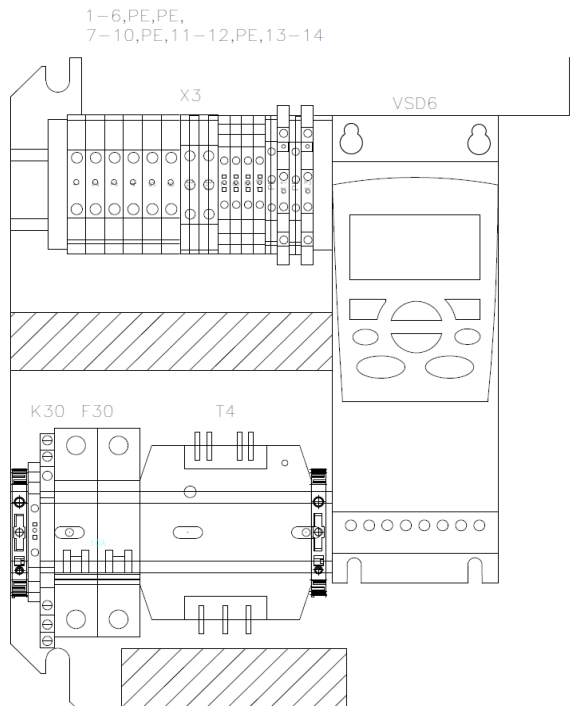


Item	Part no	Description
T3		HF charger
VSD3	560350-L	Left drive
K103	113466	Contactora - Left drive
VSD4	560350-R	Right drive
K104	113466	Contactora - Right drive
F11	560188	Fuse - Control power

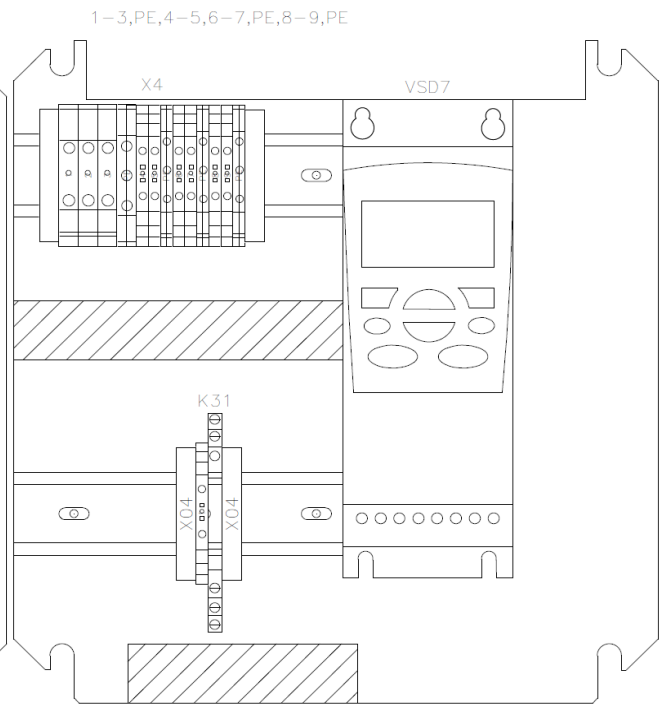


Item	Part no	Description
F12	560189	Fuse - Charger
F13	560190	Fuse - Left drive
F14		Fuse - Right drive
F15	560192	Fuse - Grinding head lift actuator
F17	112394	Fuse - Vac tilt actuator
F18		Fuse - Light, Horn, 12V
F19	112395	Fuse - Sensors
F20	560193	Fuse - PLC
F21	560194	Fuse - PLC
F22		Fuse - PLC
F23	560320	Fuse - Outlet valve
F24		Fuse - Inlet valve left
F25		Fuse - Inlet valve right
K898	113615	Safety relay
PLC1	113472	Mobile controller
K10	113224	Contactactor - Grinding head lift actuator up
K11	113224	Contactactor - Grinding head lift actuator down
K12	560191	Contactactor - Vac tilt actuator up
	113456	Surge suppressor
K13	560191	Contactactor - Vac tilt actuator down
	113456	Surge suppressor
K14	113391	Contactactor - Front light
K16	113494	Contactactor - Horn
K17		Contactactor - Beacon
K18		Contactactor - Buwarning
K19		Contactactor - Grinding head lift actuator up
K20		Contactactor - Grinding head lift actuator down
K21		Contactactor - Outlet valve
K22	113391	Contactactor - Inlet valve left
K23		Contactactor - Inlet valve right
K24	560198	Contactactor - PLC - Power check
T5	113774	DC/DC converter

**PU-3 - component list**

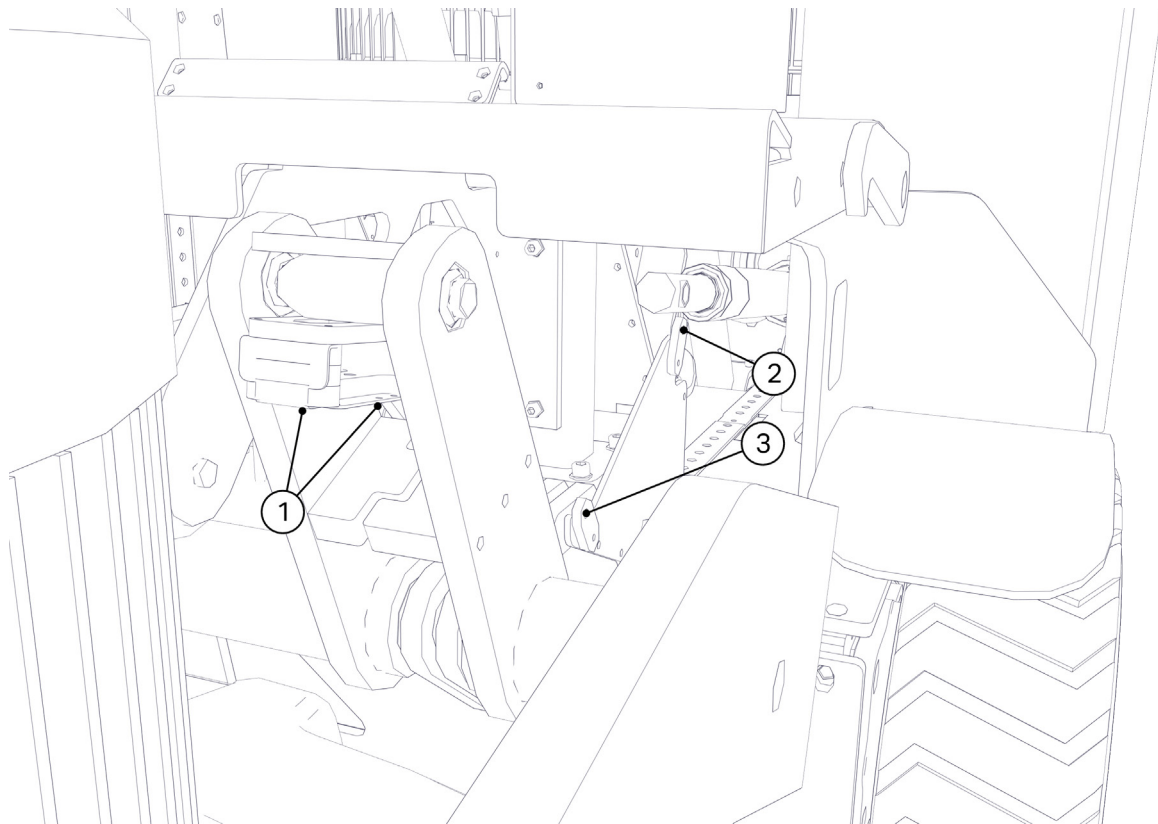



**PU-4 - component list**



Item	Part no	Description	
VSD6	113284	Inverter	
K30	113494	Contactor	Contactor - 24VDC
F30		Fuse	Fuse - Power supply
T4	113231	Power supply	
K31	113494	Contactor	Contactor - 24VDC
VSD7	560235	Inverter	

## Sensors



Ikon	Item	Description	Part no.	Qty.
	1	Floating sensor	111934	2
	2	Lift sensor		1
	3	Grinding sensor		1

**Head office**

---

**HTC Sweden AB**

PO Box 69  
614 22 Söderköping  
Sweden

Street (delivery) address:

Klevvägen 7  
614 92 Söderköping  
Sweden

Phone: +46 (0)121-29400  
Fax: +46 (0)121-15212  
E-mail: [info@htc-sweden.com](mailto:info@htc-sweden.com)  
[www.htc-floorsystems.com](http://www.htc-floorsystems.com)

