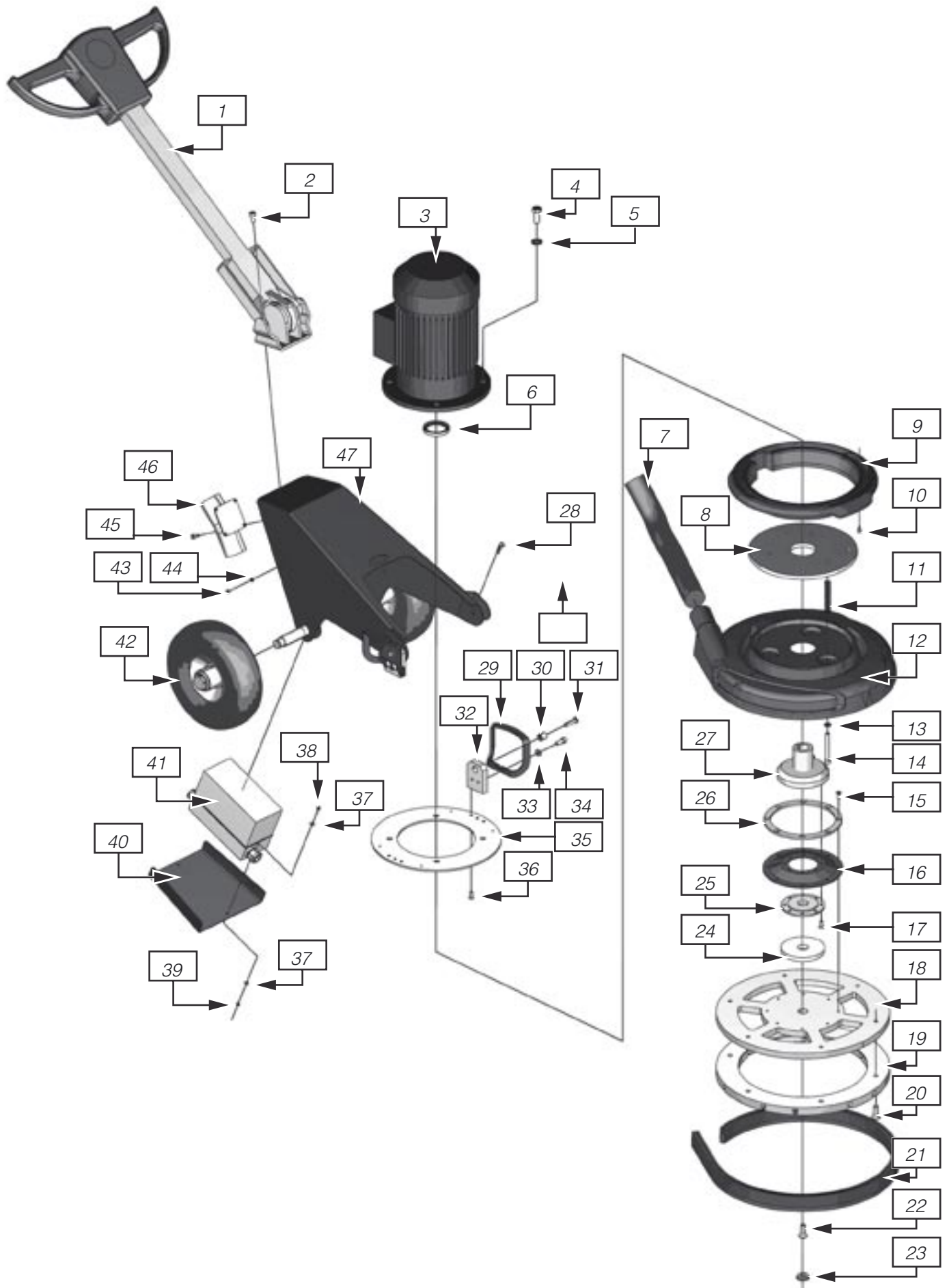


# Exploded diagram, HTC 400



## Parts list, HTC 400

Ref:	Description:	Art.No:	Qty:
1	Handle HTC 400	111102	1
2	Screw MC6S M8x20 8.8 zinc-plated	310161	4
3	Motor 2.2kW 400V (Axle:28x45) Black	110722	1
	Motor 2.2kW 208V 112-6 60Hz	111358	1
	Motor 2.2kW 460V 112-6 60Hz	111359	1
4	Screw M6S M12X30 zinc-plated	310128	4
5	Washer BRB M12 13x24x2.5	310003	4
6	Radial seal 45x60x8 HMSA4	111120	1
7	Ermaflex F51 mm	10073	0.4 m
8	Motor plate, lower HTC 400	111110	1
9	Cover HTC 400	111140	1
10	Screw MC6S M5x8 zinc-plated	310139	4
11	Spring cover HTC 400	111121	3
12	Cover HTC 400	111140	1
13	Washer BRB M8	310077	3
14	Screw MC6S M8x70 zinc-plated	310074	3
15	Screw MFT-TT M6X16 8.8 zinc-plated	310014	8
16	Pad, polycord green 184 mm	110369	2
	Pad, polycord black 184 mm	110371	1
17	Screw MFT-TT M6X16 8.8 zinc-plated	310014	8
18	Fan, HTC 400	111113	1
19	Tool holder D400 Aluminium	210942	1
20	Screw MF6S M10x50 zinc-plated	310242	7
21	Brush strip (height 10mm)	111335	1.45 m
22	Screw MF6S M10x50 zinc-plated	310242	1
23	Termination plug brass M25	110138	1
24	Spring	110942	1
25	Holder, polycord inner	110957	1
26	Holder, polycord outer HTC 400	111112	1
27	Flange hub, HTC 400	111115	1
28	Hair pin, zinc-plated 2x41	310147	2
29	Lifting handle 420	110844	2
30	Bushing HTC 420	10474	2
31	Sprint chassis HTC 420	310151	2
32	Fixing lug HTC 420	110660	2
33	Washer BRB M8	310077	4
34	Screw MC6S M8x20 8.8 zinc-plated	310161	4
35	Motor plate, upper HTC 400	111177	1
36	Screw MFT-TT M6X16 8.8 zinc-plated	310014	6
37	Washer BRB M4	310149	4
38	Screw MF6S M4x16 zinc-plated 8.8	310248	2
39	Locknut, M4	310247	2

## Parts list, HTC 400

40	Mounting plate, elec HTC 400	111311	1
41	Electrical equipment, HTC 400	111350	1
42	Wheel HTC 500	110381	2
43	Screw MC6S M4x8 zinc-plated 8.8	310244	4
44	Washer BRB M4	310249	4
45	Screw MC6S M6X10 8.8 zinc-plated	310005	4
46	Adapter for 50 hose	111312	1
47	Chassis HTC 400	111111	1